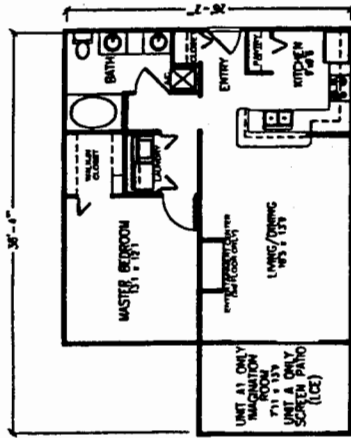


FLOOR PLANS FOR UNITS
FOR
THE GRAND VENEZIA AT BAYWATCH, A CONDOMINIUM

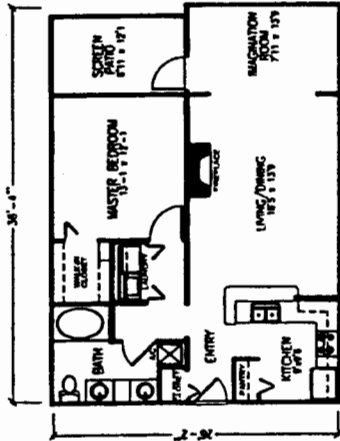
EXHIBIT "2"
TO
PROSPECTUS

THE GRAND VENEZIA AT BAYWATCH, A CONDOMINIUM

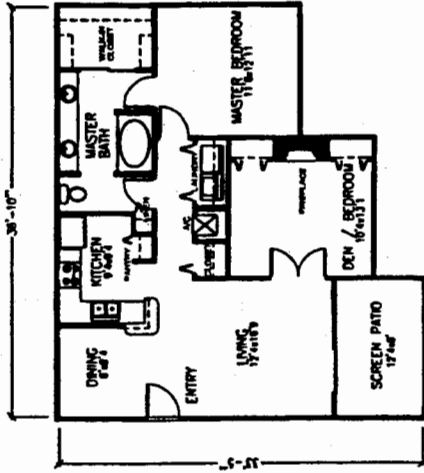
BEING A PORTION OF SECTIONS 20 & 29, TOWNSHIP 29 SOUTH, RANGE 16 EAST
PINELLAS COUNTY, FLORIDA



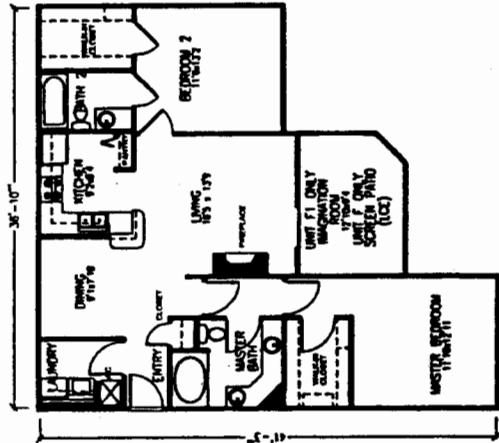
TYPICAL UNIT A & A1



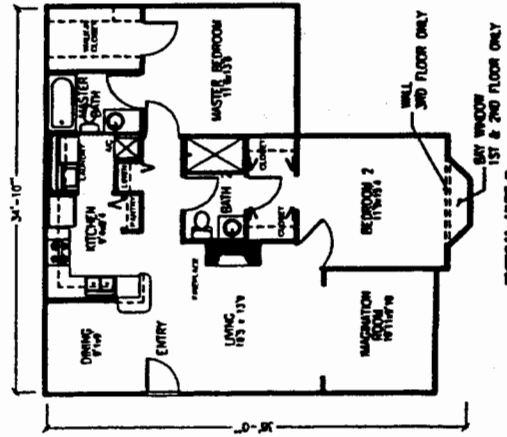
TYPICAL UNIT B



TYPICAL UNIT C



TYPICAL UNIT F & F1



TYPICAL UNIT D

LEGEND

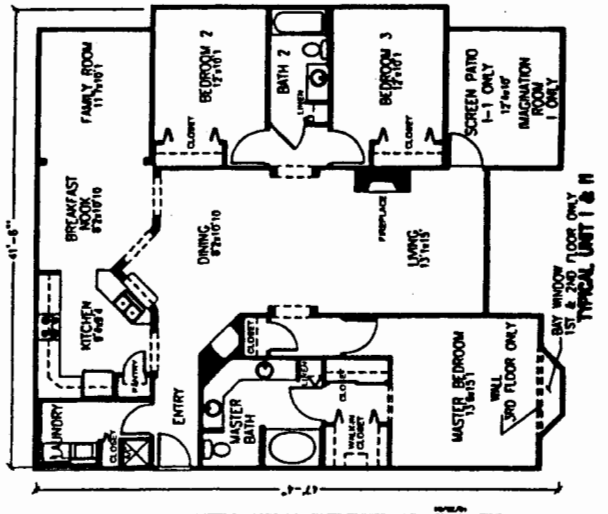
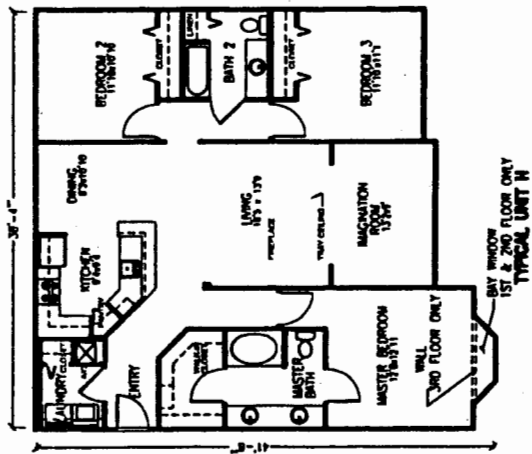
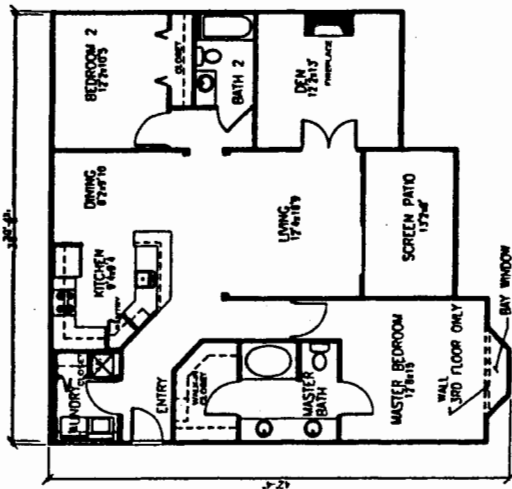
RW	ROOM
WH	WATER HEATER
TP	TYPICAL

- NOTE:
1. UNIT FLOOR PLANS ARE OF TYPICAL UNITS AND ARE BASED ON ARCHITECTURAL PLANS. ACTUAL ROOM DIMENSIONS MAY VARY.
 2. SEE DETAIL 3 FOR "COMMONS UNIT, TOWNHOMES ELEMENTS, UNITED COMMON ELEMENTS" AND "SHARED FACILITIES" DETAILINGS.
 3. ALL AREAS WITHIN THE UNITS OF THE PROPERTY DESCRIBED HEREIN THAT ARE NOT DESCRIBED AS "UNIT" OR "COMMONS UNIT" ARE "SHARED FACILITIES" AS DEFINED IN THE DECLARATION OF COMMONS.



THE GRAND VENEZIA AT BAYWATCH, A CONDOMINIUM

BEING A PORTION OF SECTIONS 20 & 29, TOWNSHIP 29 SOUTH, RANGE 16 EAST
PINELLAS COUNTY, FLORIDA



- NOTE:
1. UNIT FLOOR PLANS ARE OF TYPICAL UNITS AND ARE BASED ON ARCHITECTURAL PLANS. ACTUAL ROOM DIMENSIONS MAY VARY.
 2. SEE SHEET 9 FOR "CONDOMINIUM UNIT", "COMMON ELEMENTS", "LIMITED COMMON ELEMENTS" AND "SHARED FACILITIES" DESCRIPTIONS.
 3. ALL AREAS WITHIN THE LIMITS OF THE PROPERTY DESCRIBED HEREIN THAT ARE NOT DESIGNATED "UNIT" OR "COMMON ELEMENTS" ARE RESERVED AND SECURITY AS DERIVED IN THE DECLARATION OF CONDOMINIUM.

LEGEND	
RM	ROOM
WB	WATER HEATER
TP	TYPICAL